

# The Web Console

Direct Email Access from your Browser

Support: +27 12 6538 007  
Facsimile: +27 86 6508 657  
Email: [support@regalpanther.com](mailto:support@regalpanther.com)  
[www.regalpanther.com](http://www.regalpanther.com)

The web console gives access to your email like it is a webpage. Open your web browser (we're using Internet Explorer 7 in this example) and follow the indicated steps to login. Each step has a corresponding number on the screenshot to illustrate where it can be found.

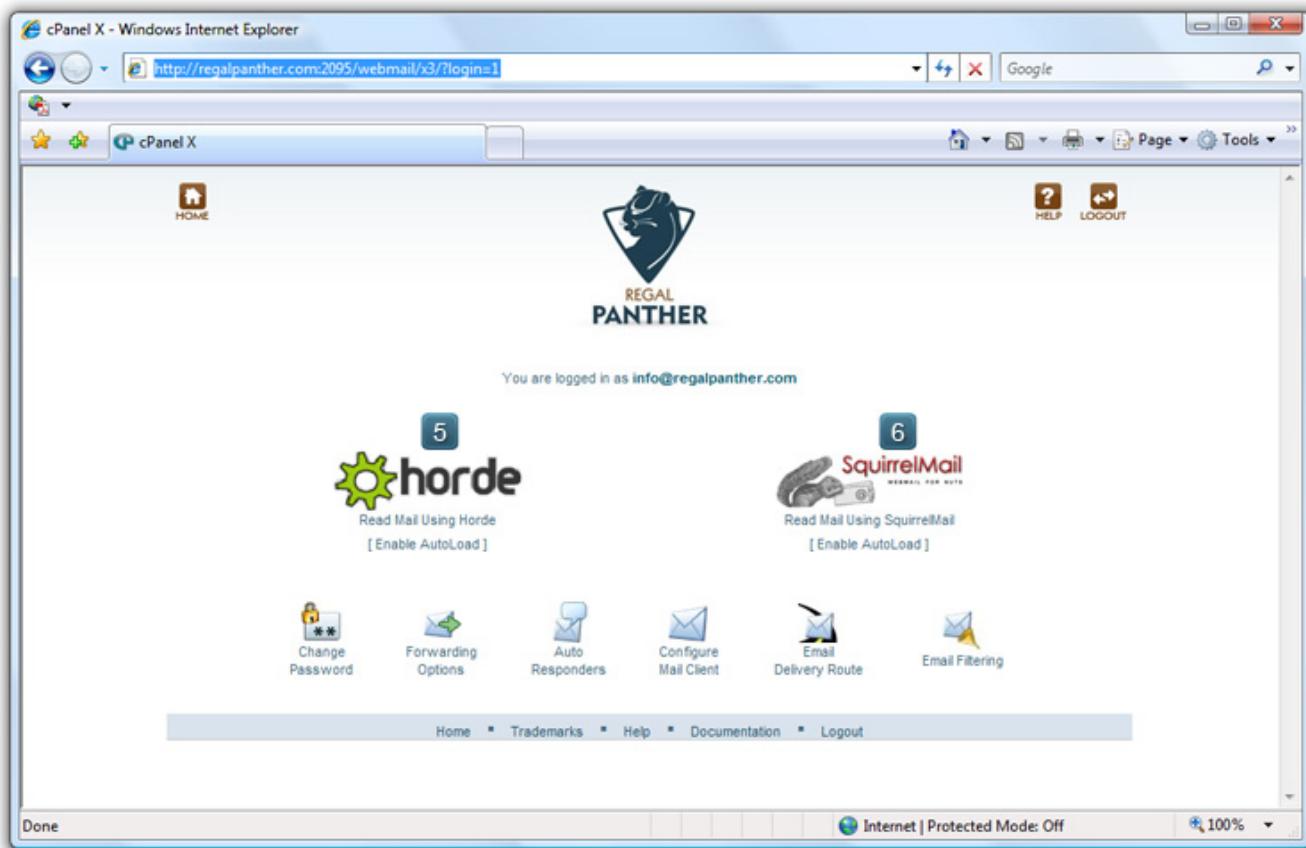


1. In the URL bar enter your site name followed by /webmail. Hence it will appear in the URL bar as **www.yourdomain.co.za/webmail**. As an example we will use the domain **www.regalpanther.com**. Notice in the URL bar that **www.regalpanther.com/webmail** has been entered. Once you've entered the domain, hit enter. The site will load and you should see something similar to the screenshot above. There is also a direct link to your webmail on the left hand navigation bar from the Regal Panther hosting page located at <http://regalpanther.com/hosting.php>.
2. You will be presented with a screen requesting your login details. In the first box enter your complete email address in the form **yourname@yourdomain**. Following our example we will enter **info@regalpanther.com** as our email.
3. In the password field enter the password provided to you.
4. When you've entered all the information, click on the **OK** button.

# The Web Console

Direct Email Access from your Browser

Support: +27 12 6538 007  
Facsimile: +27 86 6508 657  
Email: [support@regalpanther.com](mailto:support@regalpanther.com)  
[www.regalpanther.com](http://www.regalpanther.com)



5. Once logged in you will be presented with the screen illustrated above. View your mail by clicking on the **horde** button.
6. You can also view your mail using **Squirrel Mail** if you have problems with **horde**.

You can select the language that subsequent information is presented in by selecting an applicable language from the dropdown field on the next screen. English is set as the default. Press **OK** and you will be presented with your email.

Congratulations! You've successfully accessed your mail via the web console. If you need further assistance please visit our support page at <http://regalpanther.com/support.php>